
TREĆA REGIONALNA KONFERENCIJA O PROCJENI UTJECAJA NA OKOLIŠ
THIRD REGIONAL CONFERENCE ON ENVIRONMENTAL IMPACT ASSESSMENT
Vodice, Hrvatska / Croatia • 13.-16. rujna 2017. / September 13th-16th, 2017

Vesna Kolar Planinšič

**Transboundary environmental impact assessment for extension
of Karavanke tunnel project between Slovenia and Austria**

Prekogranična procjena utjecaja na okoliš za Karavanški predor između
Slovenije i Austrije

Vesna Kolar Planinšič, Msc., Espoo Focal point, Dunajska 48, Ministry of Environment and Spatial
Planning, Republic of Slovenia, 1000 Ljubljana, vesna.kolar.planinsic@gov.si

Process of transboundary SEA and EIA Prekogranična SEA i EIA

Extension of long distance motorway

- Convention on Transboundary Impact Assessment in a Transboundary Context (Espoo)
Appendix I, List of activities (7) Construction of motorways, express roads...
Daljinski avtoput po Espoo Konvenciji

Existing motorway A 2 since 1986-1991,

- Today: Traffic development and safety problems, tourist season 15.000 cars/day
(t. i. [Turska avtocesta](#), ger. *Tauernautobahn*)
Tunel [Karavanke](#) (ger. *Karawankentunnel*)
Autoput koji eksistira od 1991, Povećan promet i problemi

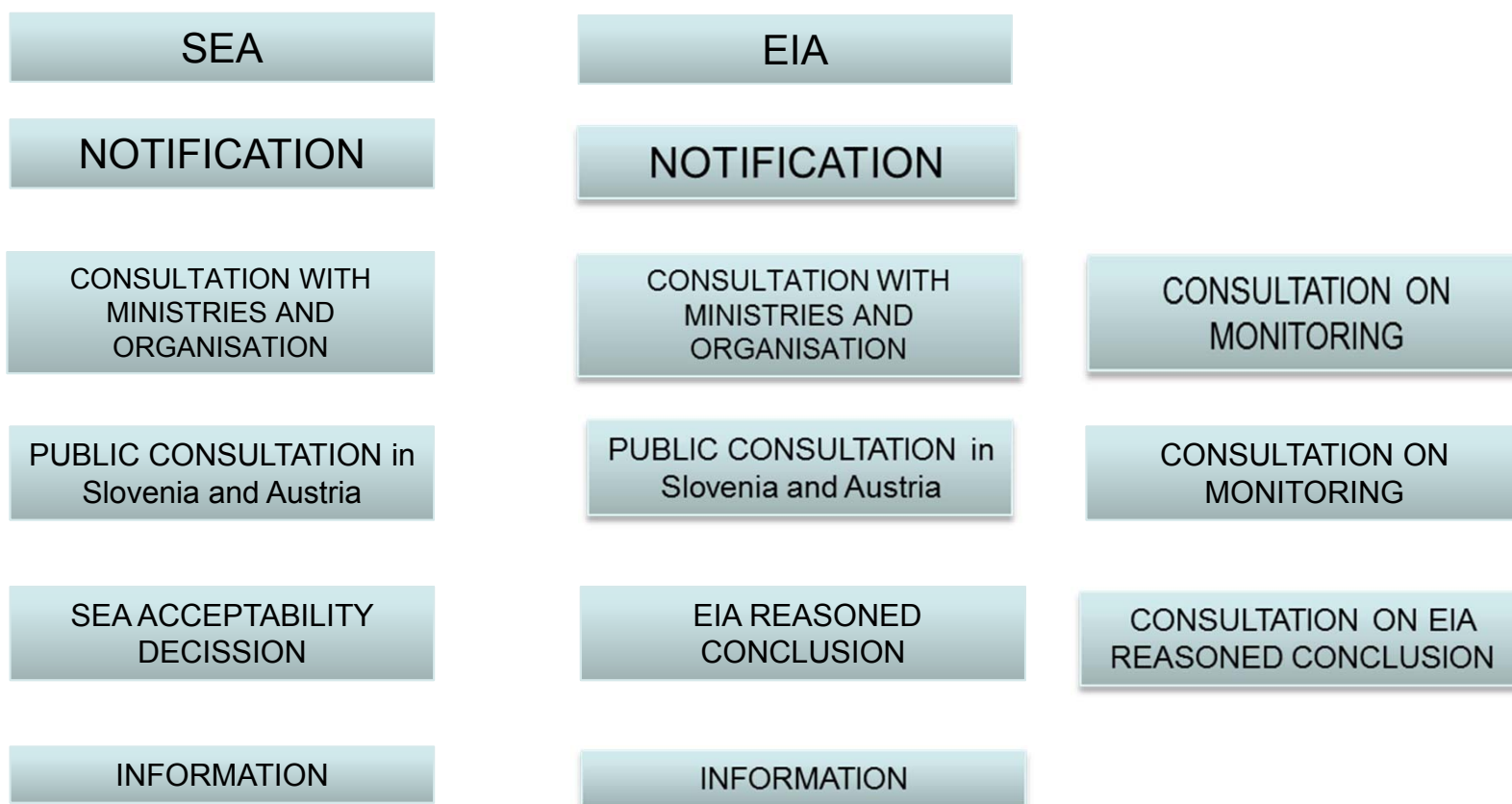


Process of transboundary SEA and EIA

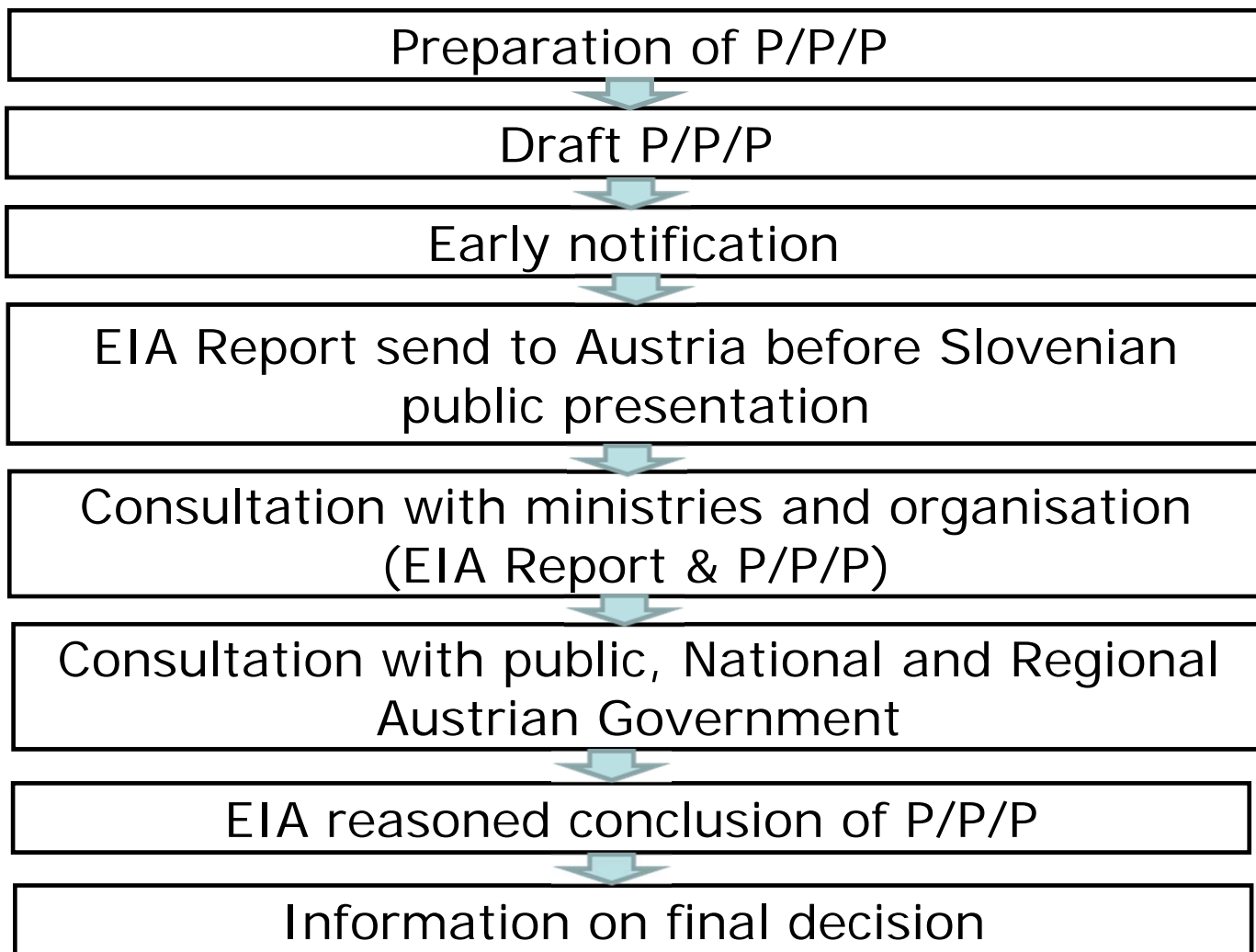
- Notification
- Consultation with ministries and organisation
- Public consultation
- Possible impacts on underground water
- Transboundary technical consultation
- Interdisciplinary teams
- Geological structure
- Mitigation measures
- Monitoring measures

Process of transboundary SEA for National Spatial Plan and EIA for project extension of tunnel Karavanke

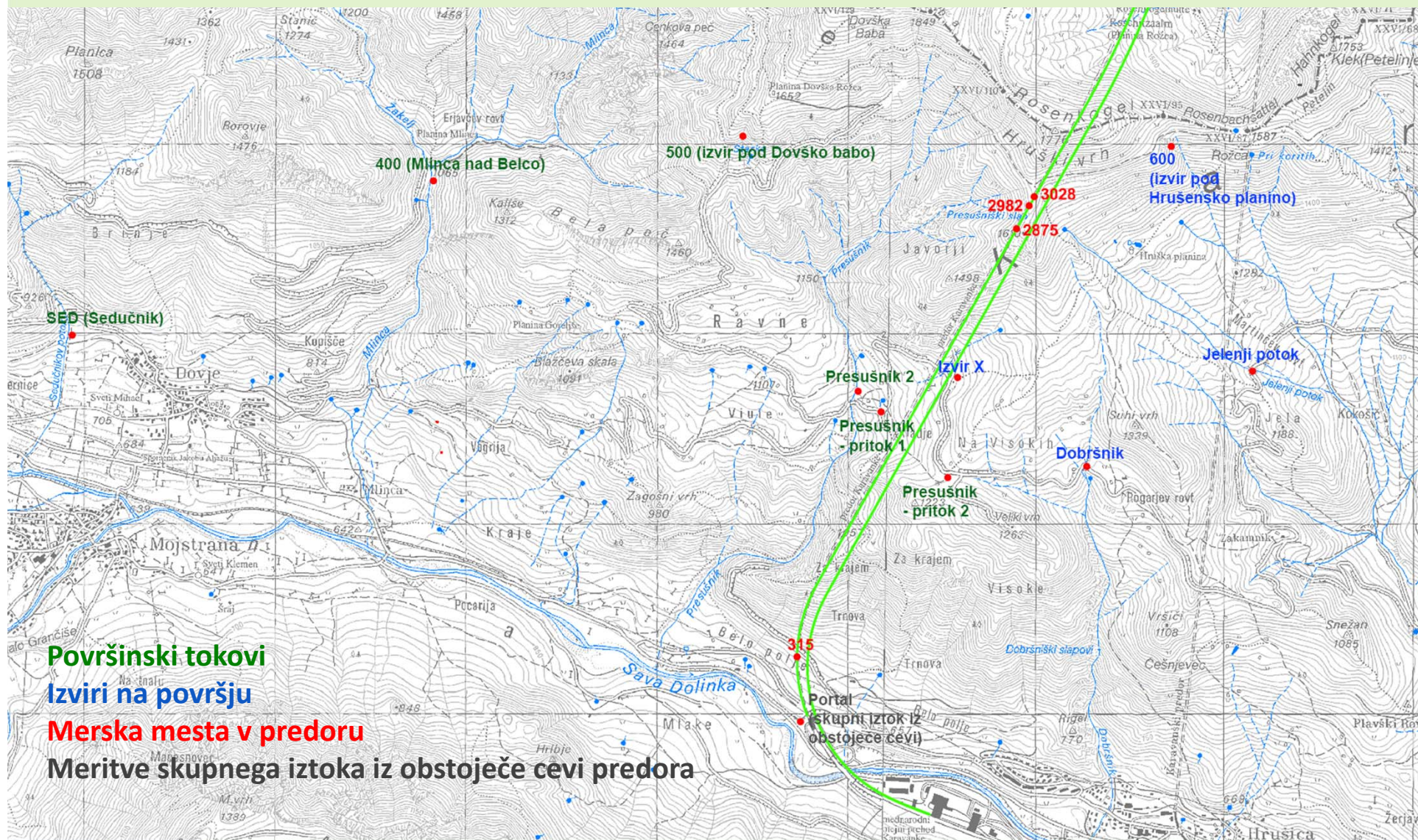
COOPERATION BETWEEN FOCAL POINTS SLOVENIA-AUSTRIA



Proces of transboundary EIA

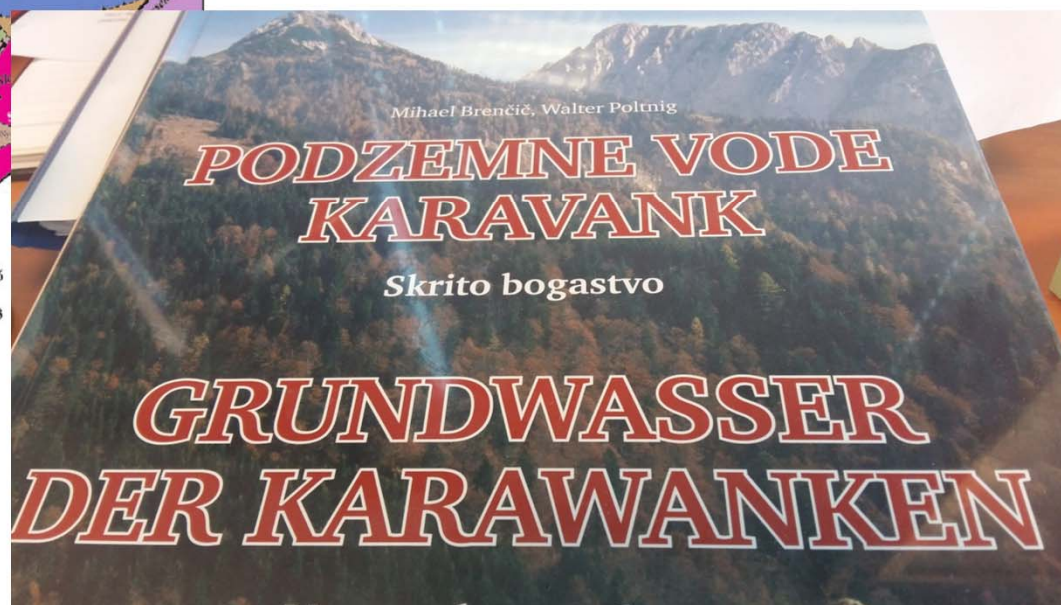
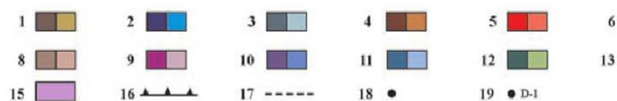
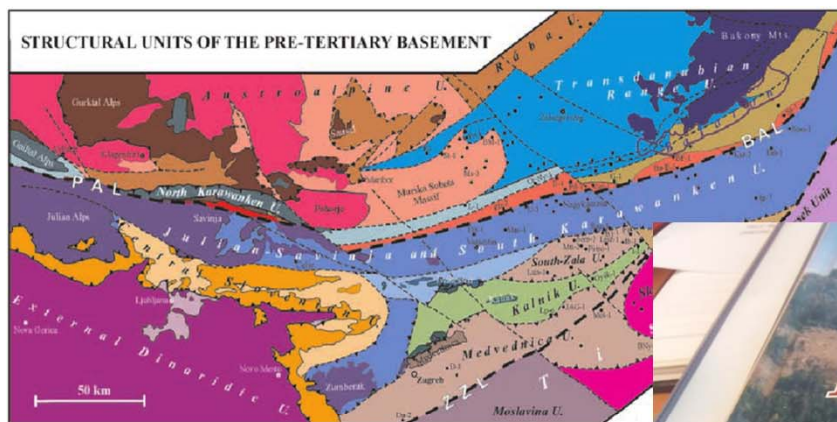


Transboundary environmental impact assessment for extension of Karavanke tunnel project between Slovenia and Austria
Prekogranična pocjena utjecaja na okoliš za Karavanški predor između Slovenije i Austrije



Draft proposal for monitoring programme

Consultation on monitoring in relation to Geological and Hydrological Research Common research base helps in expert discussion



Draft proposal for monitoring programme

Common monitoring programme, improvements , agreement

- | | | |
|----------------------|-------------------------------|-------------------------|
| ■ Motnost | ■ NO_3^- | ■ NO_2 |
| ■ SO_4^{2-} | ■ Cl^- | ■ Cl^- |
| ■ pH agresivni | ■ $\text{T [}^\circ\text{C]}$ | ■ F^- |
| ■ CO_2 | ■ Električna prevodnost | ■ PO_4^{3-} |
| ■ NH_4 | ■ poraba KMnO_4 | ■ TOC |
| ■ Ca^{2+} | ■ Skupna trdota | ■ Sulfid |
| ■ Mg^{2+} | ■ Karbonatna trdota | ■ Devterij ^2H |
| ■ Na^+ | ■ Nekarbonatna trdota | ■ Kisik ^{18}O |
| ■ K^+ | ■ Fe | ■ Tritij ^3H |
| ■ HCO_3^- | ■ Mn | |

FIGURE 2: Final common monitoring parametre
SLIKA 2. Final monitoring parametre

Methodology and Results

Metodologija i rezultati

Oznaka merskega mesta	Pretok - frekvenca	Kemijska analiza - frekvenca	Kemijska analiza - parametri
Površinski tokovi			
SED (Sedučnik)	Mesečno	4x letno	Glej Seznam 2
400 (Mlinca nad Belco)	Mesečno	4x letno	Glej Seznam 2
500 (Izvir pod Dovško babo)	Mesečno	4x letno	Glej Seznam 2
Presušnik 2	Mesečno	4x letno	Glej Seznam 2
Presušnik - pritok 1	Mesečno	4x letno	Glej Seznam 2
Presušnik - pritok 2	Mesečno	4x letno	Glej Seznam 2
Izviri na površju			
Izvir X	Mesečno	4x letno	Glej Seznam 2
600 (Izvir pod Hrušensko planino)	Mesečno	4x letno	Glej Seznam 2
Dobršnik	Mesečno	4x letno	Glej Seznam 2
Jelenji potok	Mesečno	4x letno	Glej Seznam 2
Merska mesta v predoru (po stacionažah)			
315	Mesečno	4x letno	Glej Seznam 3
2875	Mesečno	4x letno	Glej Seznam 3
2982 (900 by-pass)	Mesečno	4x letno	Glej Seznam 3
3028	Mesečno	4x letno	Glej Seznam 3
Merska mesta skupnega iztoka iz obstoječe cevi			
Na mestu obstoječega predora	Mesečno	4x letno	Glej Seznam 2

Results, discussion and conclusions

Rezultati, diskusija i zaključci

- **Good cooperation between focal point is needed to manage the process**
Good cooperation between experts helps to find the solutions
- **Development of interdisciplinary teams on both sides of the border helps in expert agreements**
- **Agreement on each step is essential**
Agreement on monitoring programme during the building phase and on EIA reasoned conclusion helps to end the process
Transboundary procedure could improve the quality